

GENDER INEQUALITY TOWARDS THE MALE DOMINATION IN THE MOVIE “ENOLA HOLMES 2”

Yesiana Vianingrum¹, Winarti²

^{1,2}Universitas Duta Bangsa Surakarta

Corresponding Author: yeseulmin14@gmail.com

Submitted : June 5, 2023

Reviewed : January 17 2024

Accepted : March 8, 2024

ABSTRACT

Gender inequality is a social problem where there is discrimination or unequal treatment between men and women in access to important resources in human life. The issue of male dominance and restrictions on rights and roles by patriarchal culture have successfully shaped the shackles and discrimination of women around the world. This discrimination is the basis for the feminist movements that emerged as a manifestation of the desire to fight for women's rights in social life. In this globalization era, social issues such as gender inequality are illustrated in the form of movies. The movie Enola Holmes is one example of an illustration of gender inequality in a patriarchal society. Enola Holmes 2 is what gave rise to the researcher's desire to conduct a deeper study on the issue of gender inequality. This study aims to analyze the forms of gender inequality and how the issue of gender inequality affects the female characters in the movie Enola Holmes 2. This study is a descriptive qualitative study, the primary data is taken from the movie Enola Holmes 2 itself and the secondary data is taken from the transcript of the movie. The researcher uses the theory of patriarchy by Walby (2017) to analyze the issue of gender inequality and feminism in the movie Enola Holmes 2. The results of this study are packaged in the form of a thesis entitled "Gender Inequality Towards Male Domination in The Movie Enola Holmes 2".

INTRODUCTION

Literature is an imaginative work obtained from the manifestation of thoughts, ideas and feelings of an individual which is expressed in an artistic work in oral or written form and usually contains elements of aesthetic beauty that can be enjoyed, understood and reused by the society. Sugihastuti (Lestari, 2019) considers that literature is an intermediary that becomes a receptacle for conveying the ideas and experiences of an author to their readers, and it becomes a representation of the author's views on social issues around them.

The literary phenomenon related to real social life can be in the form of political, cultural, dissent, crime and other social problems. According to Morris (2015) literature can introduce us to the fact that literary work is a direct part of the social environment, a collection of active literary works from various ages and

certain social groups. Individual literary works are dependent elements and it can't be separated from the literary environment.

Wright & Roger (Wani, 2019) said "gender inequality or gender discrimination is something related to the injustice of rights between men and women due to the different gender roles between them. This results in unequal treatment experienced by people in social life." This case can be caused by several factors such as behavior, expression, physique, and the role of the both genders in society which trigger the emergence of various problems including social, political, cultural and even religious aspects. Responding to this sensitive issue, there are some people, especially women, who feel skeptical and reject the statement claiming that women can't receive equal rights just like men. They have a different point of view and consider that all women have the right to participate and play an active role in society. Along with the opinion about women should get justice in society, a movement that aims to acquire gender equality called feminism emerged. Victoria (2021) said the definition of feminism is a belief that the rights of women and men are on the same level. In consequence it can be concluded that feminism is a movement fighting for equality in social, economic, political and cultural terms between the two genders.

The theories above gave rise to the researcher's desire to analyze the issue of gender inequality in a movie entitled *Enola Holmes 2*. This movie was released in October 2022. This movie contains the story of Enola's struggle to break the gender inequality issue in the patriarchal society. A journey in terms of self-evident to escape from the shadow that women are unable to hold the same level as men.

RESEARCH METHODOLOGY

The researcher applied a qualitative method in this research. Descriptive qualitative research does not apply or rely on questionnaires so it tends to collect various forms of data through documents, articles, and observations. Descriptive qualitative is frequently used as a method to explore problems in a scientific study. Through this method, a simple problem statement developed into a broader perspective, as Creswell (2012, cited in Arafah 2018) has explained.

In the research entitled *Gender Inequality Toward the Male Domination in The Movie "Enola Holmes 2"*, the researcher uses theory of patriarchy of Walby (2017) and uses literature research methods to analyze and collect various data from primary and secondary sources related to the movie. The data will be obtained from pictures, dialogues, narrations and actions that appear during the movie.

RESULT AND DISCUSSION

The researcher classified the data in this chapter based on the types of the patriarchal structures. The researcher found several types of patriarchal structures that that causes gender inequality in the movie *Enola Holmes 2*, also the affect of gender inequality to the female characters there. The researcher used Walby (2017) theory to analyze the data obtained.

- a. Types of Patriarchy in the Movie *Enola Holmes 2*
 - a) Paid Employment



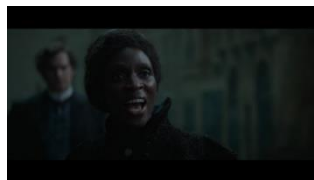
ENOLA : *So, my brother*

ENOLA : ***While I had not a single case, Sherlock has been drowning in them.***

Data number 5 contains Enola's monologue which tells about the condition of her private detective office which has not got any clients at all. In contrast to Enola's situation, a scene appears where Sherlock leaves his office followed by many journalists and clients who want to recruit him to solve their cases.

In his branch of patriarchal theory, Walby (2017) states that *“More powerful workers have greater opportunities to get extraordinary jobs. In terms of job skills, the gender aspect is always prioritized, because male workers are considered stronger, they are more accepted by employers than female workers.”*

It's evident in this clip scene, Enola failed to convince all of her clients to use her detective services because of gender issues. While on the other hand Enola said "Sherlock has been drowning in them," the sentence explains that Sherlock gets lots of offers to solve cases because in this position he is a male detective.



MIRA TROY: *Why shouldn't I have a share of your ill-begotten riches and punish you at the same time?*

MIRA TROY: ***Why shouldn't I be rewarded for what I can do?***

Mira Troy again angrily complained by saying *“Why shouldn't I be rewarded for what I can do?”* The sentence spoken by Mira refers to her ability and intelligence as a woman who should be appreciated but is hindered by their status in the social environment. In a patriarchal society, women do not get paid or appreciated equally to men. Walby (2017) states that *“More powerful workers have greater opportunities to get extraordinary jobs. In terms of job skills, the gender aspect is always prioritized, because male workers are considered stronger, they are more accepted by employers than female workers.”*

b) Culture



OLD LADY 1: *Am I addressing a secretary?*

This scene shows one of the old women who is a potential client of Enola staring at the detective with a confused and unsure expression while lowering her glasses. Walby cited in Akgul (2017) said “*Not only in the media, family and educational field, but gender culture is actively developing in all areas of social life. In fact, the issue of masculinity and femininity has become a major aspect in the field of employment and state policies.*” This argument could explain that the old woman seemed to underestimate Enola because according to the patriarchal culture in their social environment women are too feminine to enforce masculine jobs such as being a detective.

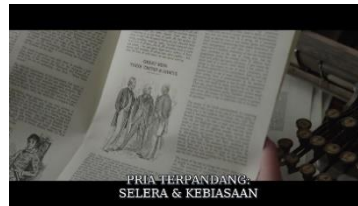


SHERLOCK: *You're still my ward. If you need my help, my offer remains on the table.*

SHERLOCK: ***Don't be so desperate to prove yourself, Enola.***

This scene is an incident in the morning after last night Enola drove Sherlock home because he was too drunk. After the two woke up, they argued until Sherlock realized that Enola had worked in a match making factory. Sherlock tells Enola that he is still her guardian, so if Enola needs help he will help her.

As Walby (Akgul, 2017) explains “*Gender culture has been actively developing in every aspect of social life without any exception. Masculinity and femininity continue to occur hand in hand with human activities.*” However, the sentence “Don't be so desperate to prove yourself” that Sherlock said afterward gives a little illustration that in that era the patriarchal aspect which assumed that women were not as good as men was still firmly attached to the culture of the society in this movie. The word ‘prove’ in that sentence refers to Enola's determination to solve Sarah's case and prove to society that women are also capable of doing things that are usually handled by men.



(This clip shows a magazine with the title “Great Men: Their Tastes & Habits”)

This is a scene where Enola reads a magazine while at Sherlock's house, in the magazine there is an article titled "Great Men: Their Tastes & Habits"

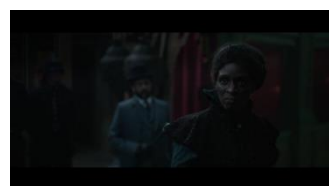
According to Walby (Akgul, 2017) explains “Gender culture has been actively developing in every aspect of social life without any exception. Masculinity and femininity continue to occur hand in hand with human activities.” Based on this theory, data number 16 shows that in the culture of a patriarchal society, men will get more spotlight in social life. Society tends to pay more attention to matters concerning men who have a more dominant social status than women.

c) State



(Picture of a reform council meeting that only has male members in it)

Data number 7 shows the councils are holding a reform meeting related to women's rights to vote. Walby (2017) explains *"The masculine character of persistence and aggressiveness is a core attribute in the politic world. Anatomically, women are considered unable to take political roles in society, this unconsciously makes the men exclude them."* As can be seen from the clip, all board members who attended the meeting were male. The absence of women serving as legislators indicates that they are not allowed or given the opportunity to occupy a high status in political life.



MIRA TROY: *I am a woman.*

MIRA TROY: **I cannot join clubs, I cannot own shares, I cannot advance myself as they can.** So...I found my own way.

Walby (Akgul, 2017) argued that *“Restricting women’s access to the best job with equal pay is a form of gender discrimination related to the state interference. Women are rarely found in the upper classes or an elite workplace.”* By saying that she cannot join clubs, she is not allowed to have assets and improve herself, Mira Troy shows that women really experience inequality and discrimination in a patriarchal environment. Because in a patriarchal culture, women's lives are considered dependent on men, they do not have the right to act as they please. In addition, many women's rights are restricted by the state, which is also a form of gender inequality in a social environment.

d) Sexuality



MAE : *Who’s this, Bess?*

BESSIE : *Enola Holmes, she’s a detective.*

MAE : ***She looks like she’ll blow over in the wind.***

In this clip scene, Enola conducts an investigation at Sarah's residence. However, during the investigation, Enola met one of the residents of the house who was also Sarah's friend named Mae.

When Bessie introduces Enola as the detective who will help her, Mae says that Enola will be easily swept away by the wind. The sentence "she looks like she'll blow over in the wind" can be interpreted as an implied mockery, by saying Enola looks easily swept away by the wind indirectly Mae says that Enola is too weak to be a detective.

As Walby (Akgul, 2017) has explained that *"significant sexuality practices determine and are determined by other social relations in human life, this can be said to be a social control."* This is because in a patriarchal society, women are considered insufficient criteria as professional workers such as detectives or agents because they are considered weak and easily carried away.



MIRA TROY: *It's just a performance.*

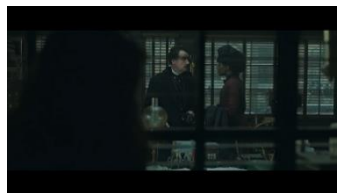
MIRA TROY: *Everyone here is playing a part, testing each other.*

MIRA TROY: *Winning... losing.*

Data number 19 shows the scene after failing to start a conversation with William, Enola went to the second floor and observed the situation from above. Not long after, McIntyre's personal assistant Mira Troy approached her and started a conversation.

According to Walby (Akgul, 2017) "*significant sexuality practices determine and are determined by other social relations in human life, this can be said to be a social control.*" Mira Troy said "It's just a game," referring to the dance party they were attending. Afterward, she says "winning" while pointing to the women who are dancing with the men in the center of the party hall, and says "losing" then points to the women who are just observing the dance from the edge of the hall. From this scene, gender inequality is portrayed by the women's lack of freedom in asking men to dance, while the men can easily choose whoever they want to dance with.

e) Violence



MIRA TROY: *But, sir, perhaps if we were to consider whether this theft is connected. I have ideas...*

MCLNTYRE: *Did I ask for your advice? Or did I simply tell you to get it done?*

Data number 11 is a scene where the Minister of Finance, Lord McIntyre and his personal assistant, Mira Troy, walk out of the room of the chairman of the Lyon match factory. After leaving the room, Mira Troy was about to give suggestions for a problem they had previously discussed in the office, but when she wanted to voice her personal opinion, Lord McIntyre quickly denied this intention.

Walby (2017) explained that *“Violence against women is a manifestation of a controlling attitude by men towards women.”* By saying "Did I ask for your advice?" indicated that Lord McIntyre was using a sarcasm which showed that he did not need and did not want to hear his assistant's personal opinion. Sarcasm is included in verbal violence because the sentence is very painful to hear. What's more, here Mira Troy's position is a woman, so that sentence can also show that women's opinions are not important to them.

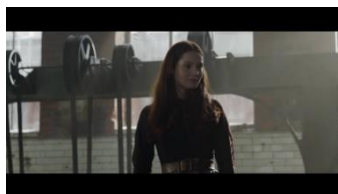
b. The Affect of Gender Inequality to the Female Characters

The researcher found the affect of the six patriarchal structures above on the female characters who appear in the movie *Enola Holmes 2*. Gender inequality because of the patriarchy above triggered the emergence of feminist movements carried out by female characters in the movie *Enola Holmes 2*. Based on these data, the following is an explanation of the affect of gender inequality to the female characters found from the movie:



(a flyer with the words "Equal Rights for Women" on it)

This data is the scene where Enola's mother, Eudoria Holmes, blows up a mailbox on the side of the road, scattering the contents of the mailbox containing flyers about equal rights for women. Flyer containing the phrase "Equal Rights for Women" is a form of feminist movement in an effort to gain gender equality in a patriarchal society. At the same time, the equality fought for through the feminist movement by the female characters in the movie *Enola Holmes 2* is fighting for their right to be able to participate in voting in community activities.



SARAH: *It's time for us to use the only thing we have. Ourselves. It's time for us to refuse to work. It's time to tell 'em no.*

Data number 27 shows the scene where Sarah Chapman makes a speech that contains elements of rebellion against the Lyon match factory. The sentence "It's time for us to refuse to work. It's time to tell

'em no" is a form of this feminist movement as a protest against the factory which has been exploiting its workers, who are all women, furthermore this rebellion was carried out because Sarah felt annoyed after discovering the fact that the Lyon lighters factory was using hazardous materials to make matches, causing many female workers to die. The feminist movement shown through this data is an effort by women to oppose the mistreatment of them in the work environment.

CONCLUSION

In Walby's patriarchy theory (2017), patriarchal structure is divided into six types, but in this study the researcher only managed to find five types including Paid Employment, Culture, State, Sexuality and Violence in the movie *Enola Holmes 2*. The researcher found that Culture is the most dominant type among the four other types that have been successfully analysed.

From the five patriarchal structures, the researcher found several data that form the affect of gender inequality on the female characters in the movie *Enola Holmes 2*. The researcher concluded that male dominance in this study has a pressure effect that makes the female characters in this movie determined to fight for the rights they should get in social life. This determination is proven by feminist movements such as rebellion and proving themselves to society that they are able to do things that can only be done by men. In essence, gender inequality influences the female characters in the movie *Enola Holmes 2* to carry out feminist movements to achieve equality.

ACKNOWLEDGEMENT

Thank you to Mrs. Winarti from Universitas Duta Bangsa Surakarta as a lecturer that already giving her best guidance, provided insight and expertise that greatly assisted the research. I would also like to show our gratitude to the best environment of friends that provided such a comfort atmosphere to finish the research properly.

REFERENCES

- Arafah, Nur.(2018).*Students' Process in Perceiving Feedback of Blended Learning Application*.Thesis.Islamic University of Indonesia:Yogyakarta.
- Bere, Noviana Osinta.(2020).*The Struggles of Woman Againts Patriarchy in "Lady of Scandal"* by Tina Gabrielle: Feminist Approach. Thesis.Putera Batam University: Batam.
- Cislaghi, Beniamino & Heise.(2020).*Gender Norms and Social Norms: Differences, Similarities and Why They Matter in Prevention Science: Sociology of Health & Illness*, Vol.42(2)
- Dari, Wulan.(2020). *Feminism in Veronica Roth's Movie "Divergent"*. *Linguistica*, vol 9(3)

- Lestari, Arfia.(2019).*An Analysis on Intrinsic and Extrinsic Elements of Sir Arthur Conan Doyle's "The Adventure of Sherlock Holmes"*. Thesis.Muhammadiyah University of Purwokerto.
- Wani, Zulfikar A & R.G Dastidar.2019.*International Journal of Research Gender Inequality - A Global Issue: International Journal of Research*, Vol.05 (19).